

VMZINC

FACADE

VMZINC®

Flat lock panel



Presentation

The system involves laying the panels on a compatible wooden framework fixed to the supporting structure (masonry or metal structure).

It consists of a wall system of factory-formed panels. The rectangular-shaped panels interlock into each other on the four sides and are secured with concealed fasteners and clips.

VMZINC Flat lock panels offer a simple yet elegant cladding solution that provides a longitudinal flat seam.

Key advantages

- > Versatile system with a traditional design
- > Vertical or horizontal installation
- > Horizontal, vertical and diamond shape
- > Interlocking with a single fold on all 4 sides
- > Recessed joints with concealed fastenings
- > Range of components offering a wide variety of all flashing details

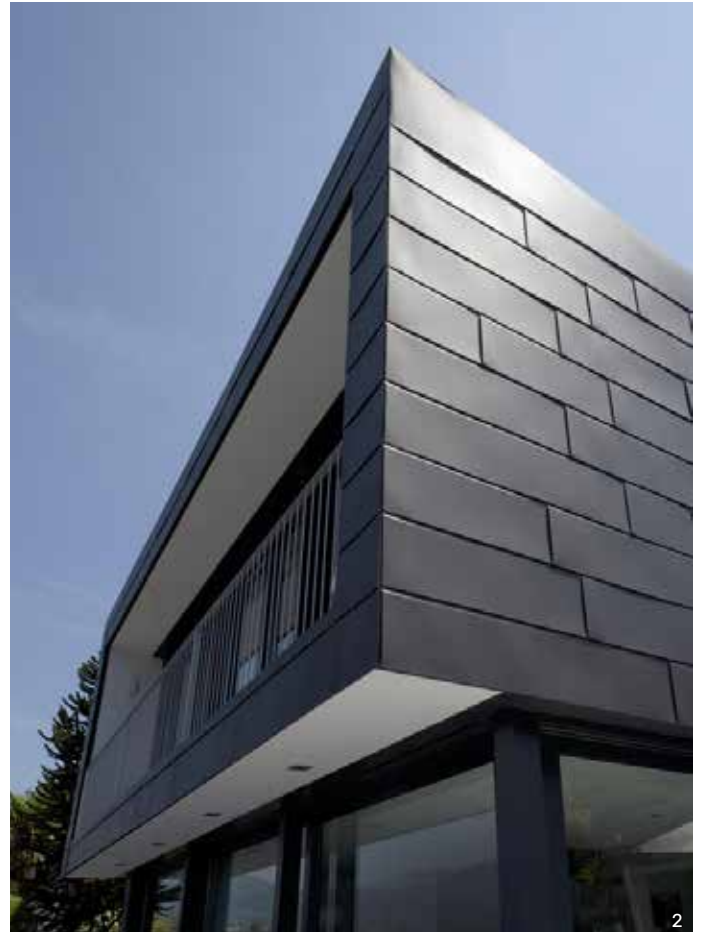


Rinku General Medical Center, Osaka (Japan) - Architect: Nikken Sekkei Ltd. - Technique: VMZINC® Flat lock panel.

Application

- > New or refurbishment projects.
- > Flat facades for public and office buildings or collective housing.

Find more references on www.vmpzinc.com



- 1: Fishermen federation, Brissac Quince, (France) - Architect: GOA, Angers - Technique: VMZINC® Flat lock panel.
- 2: House Sul Lago Maggiore (Italy) - Architect: Architetti Forni e Gueli - Technique: VMZINC® Flat lock panel.
- 3: Saint Mary Cross Mausoleum, Melbourne Cemetery (Australia) - Architect: Harmer Architecture - Technique: VMZINC® Flat lock panel
- 4: Individual house, Wasquehal (France) - Architect: Anthony Vienne - Technique: VMZINC® Flat lock panel.

Technical data

VMZINC® FLAT LOCK PANEL

Thickness	0,8 mm
Centre to centre	375 mm - 285 mm
Weight*	7,83 kg/sq.m
Length	From 0,5 to 4m
Width of the joint	10 m

(*) Weight of the system /sq. m excluding framework.

Installation

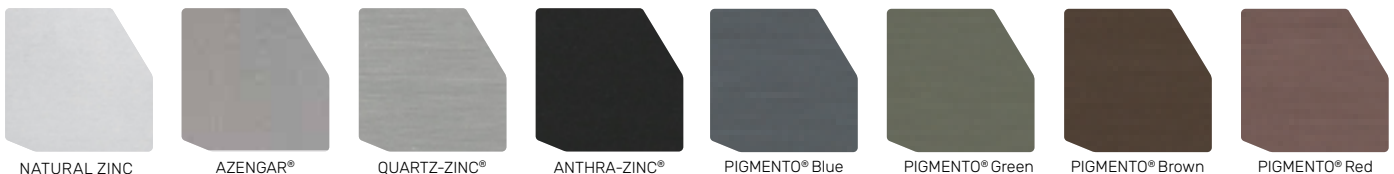
The panels are installed in a sequential order from bottom up. The panels are held in place using cleats which can be stainless steel, zinc or galvanised steel. For larger panels galvanised steel cleats are recommended. The cleats should be fixed at a maximum of 330mm centres. For small diamond shaped panels the hems should be slightly notched thus allowing the cleat to sit securely. When installing large rectangular panels the short side should be fixed with a long fixing strip. It is recommended that screws be used to secure the cleats. The use of nails offers significantly less resistance, but in the event of using nails, contractors are advised to use ring shank nails. The panels should be installed with the protective film in place.



VMZINC® - 06/24 - © VM BUILDING SOLUTIONS - VMZINC® FLAT LOCK PANEL

Surfaces

VMZINC builds the future with a large selection of zinc colors that can make your unique architectural visions a reality.



The contents of this brochure are for information only and are not binding on VM Building Solutions. The recipient is solely responsible for verifying the accuracy and completeness of the information and for ensuring that it is suitable for the recipient's intended purpose. Scan the QR code for more info:

